

Data recording with Digalox[®] DPM72

Procedure:

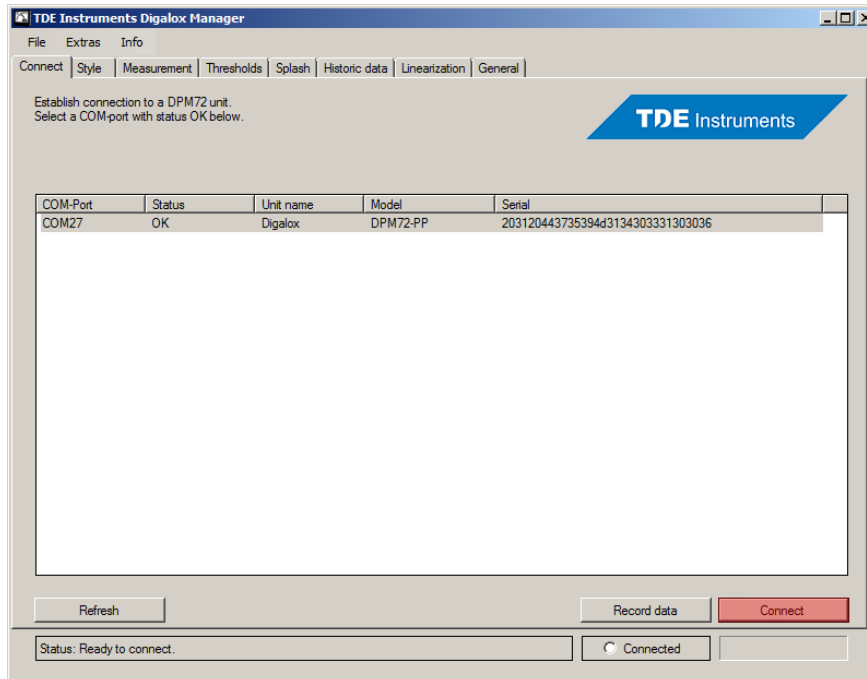
The measurement values can be read or continuously broadcast via the USB interface of the DPM72. The USB interface uses the CDC standard (Communication Device Class) and shows up as a virtual COM port on your PC.

The values can be read out in three ways:

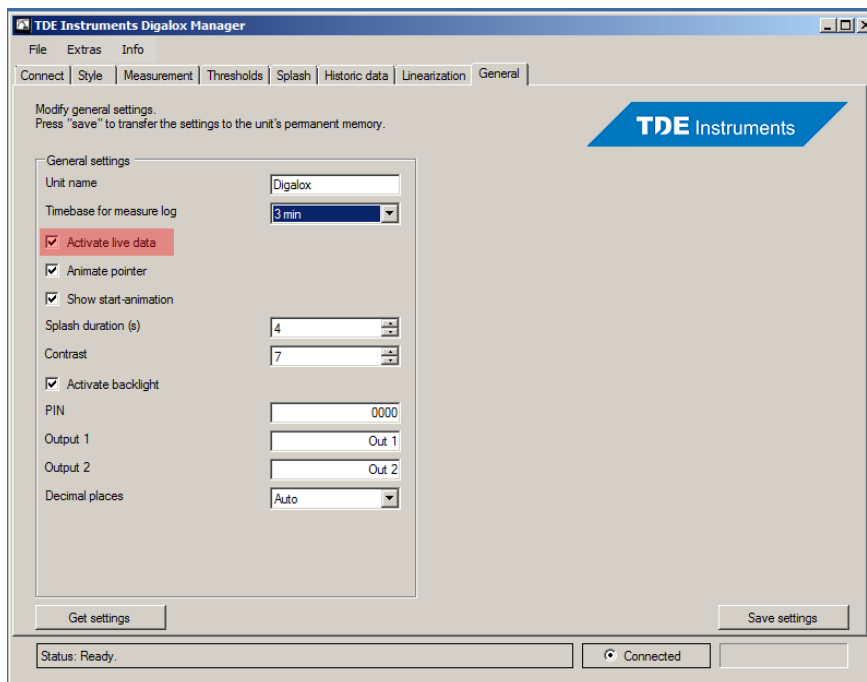
1. Record with "Digalox[®] Manager" as CSV-file
2. Continuous value transfer as text
3. Query of single values as text

1. Record with “Digalox® Manager” as CSV-file

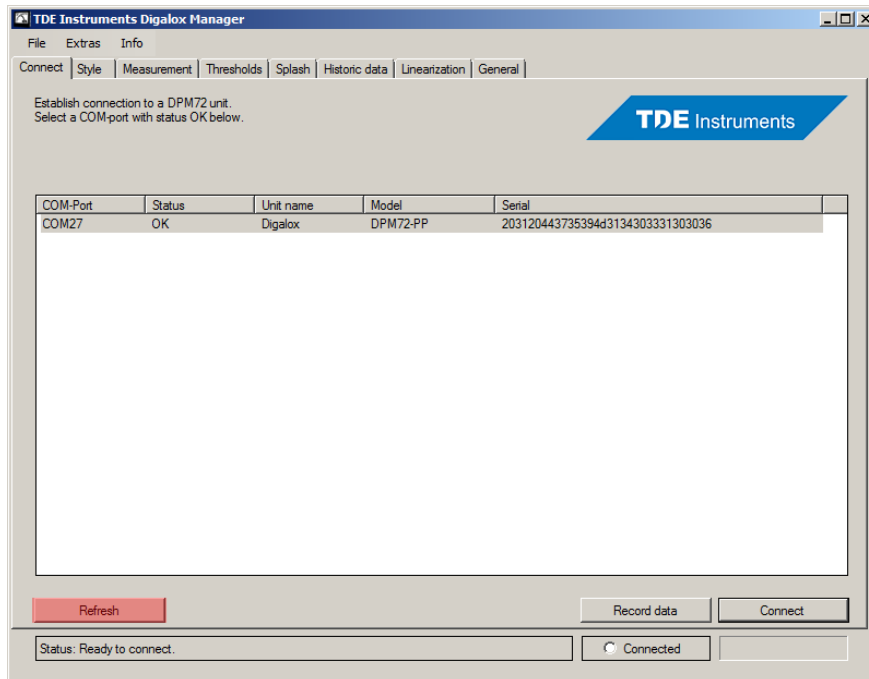
- Connect the DPM72 with a Windows PC
- Start and connect the “Digalox® Manager”



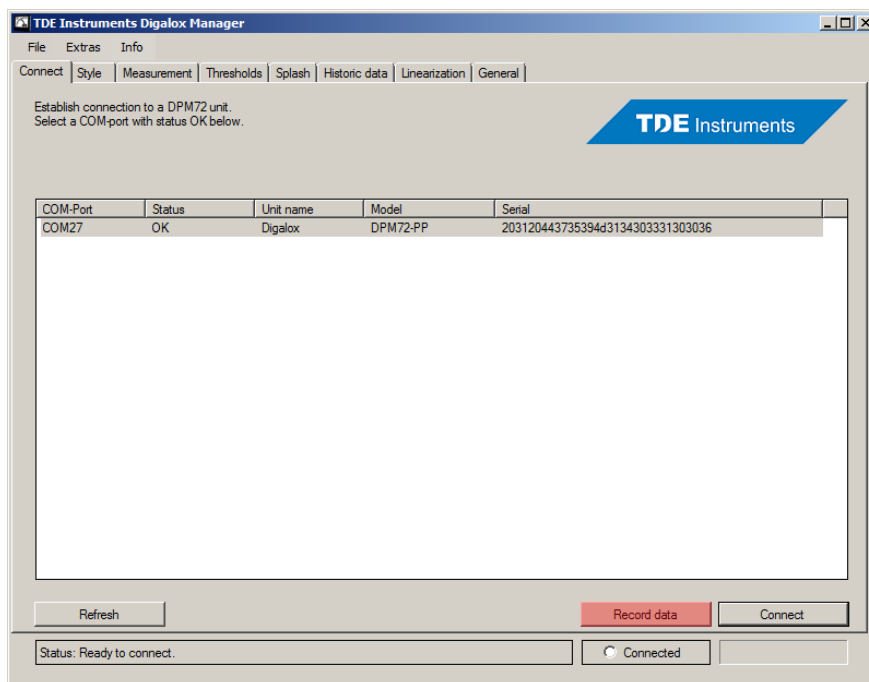
- Activate live data transmission

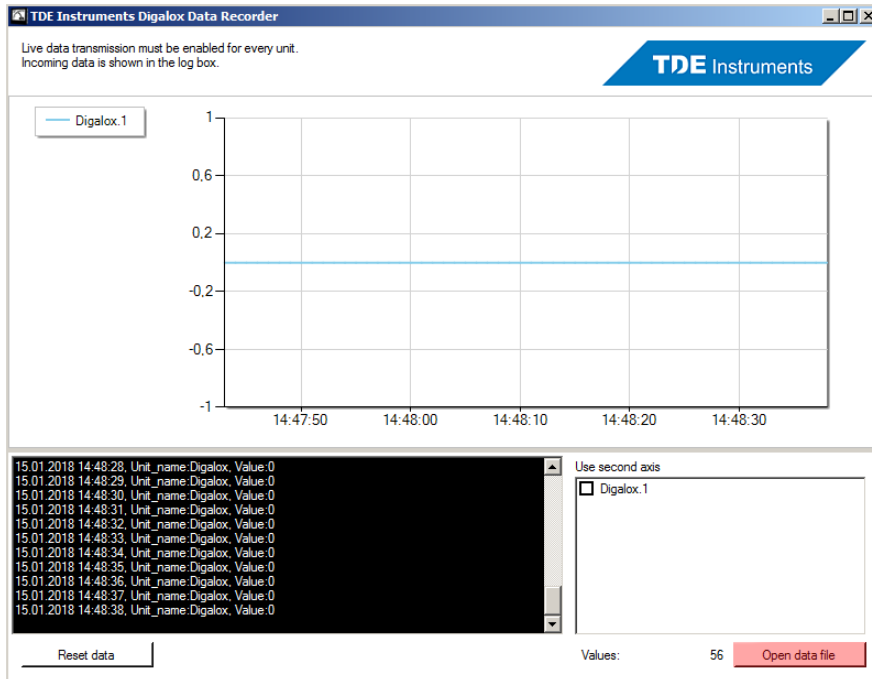


- Refresh the connection with the “Digalox® Manager”



- Start the recording in the “Digalox® Manager”





```

Datei Bearbeiten Format Ansicht ?
Dialox;446;0;-4,7;24.08.2016 14:40:51
Dialox;447;0;-4,7;24.08.2016 14:40:52
Dialox;448;0;-4,7;24.08.2016 14:40:53
Dialox;449;0;-4,7;24.08.2016 14:40:54
Dialox;450;0;-4,7;24.08.2016 14:40:55
Dialox;451;0;-4,7;24.08.2016 14:40:56
Dialox;452;0;-4,7;24.08.2016 14:40:57
Dialox;453;0;-4,7;24.08.2016 14:40:58
Dialox;454;0;-4,7;24.08.2016 14:40:59
Dialox;455;0;-4,7;24.08.2016 14:41:00
Dialox;456;0;-4,7;24.08.2016 14:41:01
Dialox;457;0;-4,7;24.08.2016 14:41:02
Dialox;458;0;-4,7;24.08.2016 14:41:03
Dialox;459;0;-4,7;24.08.2016 14:41:04
Dialox;460;0;-4,7;24.08.2016 14:41:05
Dialox;461;0;-4,7;24.08.2016 14:41:06
Dialox;462;0;-4,7;24.08.2016 14:41:07
Dialox;463;0;-4,7;24.08.2016 14:41:08
Dialox;464;0;-4,7;24.08.2016 14:41:09
Dialox;465;0;-4,7;24.08.2016 14:41:10
Dialox;466;0;-4,7;24.08.2016 14:41:11
Dialox;467;0;-4,7;24.08.2016 14:41:12
Dialox;468;0;-4,7;24.08.2016 14:41:13
Dialox;469;0;-4,7;24.08.2016 14:41:14
Dialox;470;0;-4,7;24.08.2016 14:41:15
Dialox;471;0;-4,7;24.08.2016 14:41:16
Dialox;472;0;-4,7;24.08.2016 14:41:17
Dialox;473;0;-4,7;24.08.2016 14:41:18
Dialox;474;0;-4,7;24.08.2016 14:41:19
Dialox;475;0;-4,7;24.08.2016 14:41:20
Dialox;476;0;-4,7;24.08.2016 14:41:21
Dialox;477;0;-4,7;24.08.2016 14:41:22
Dialox;478;0;-4,7;24.08.2016 14:41:23
Dialox;479;0;-4,7;24.08.2016 14:41:24
Dialox;480;0;-4,7;24.08.2016 14:41:25
Dialox;481;0;-4,7;24.08.2016 14:41:26
Dialox;482;0;-4,7;24.08.2016 14:41:27
Dialox;483;0;-4,7;24.08.2016 14:41:28
Dialox;484;0;-4,7;24.08.2016 14:41:29
Dialox;485;0;-4,7;24.08.2016 14:41:30
Dialox;486;0;-4,7;24.08.2016 14:41:31
    
```

2. Continuous value transfer as text

- Connect the DPM72 with a Windows PC
- Start and connect the “Digalox® Manager”
- Activate live data transmission
- Disconnect the “Digalox® Manager”
- Establish a connection with the COM port:

Connection settings: 19.200 Baud, no parity, 1 Stop bit

- Data format measure values:

value:ID;Checksum;Counter;Measurementmode;Measurementvalue

e.g. „value:0;140;1132;0;-4.7“

At the end of the value line, the ASCII character 13 (CR) is used as a control character for the line break.

3. Query of single values as text

- Establish a connection with the COM port:

Connection settings: 19.200 Baud, no parity, 1 Stop bit

- Send query: „value?“

- Answer data format:

value:ID;Checksum;Counter;Measurementmode;Measurementvalue

e.g. „value:0;140;1132;0;-4.7“

At the end of the value line in query and answer, the ASCII character 13 (CR) is used as a control character for the line break.